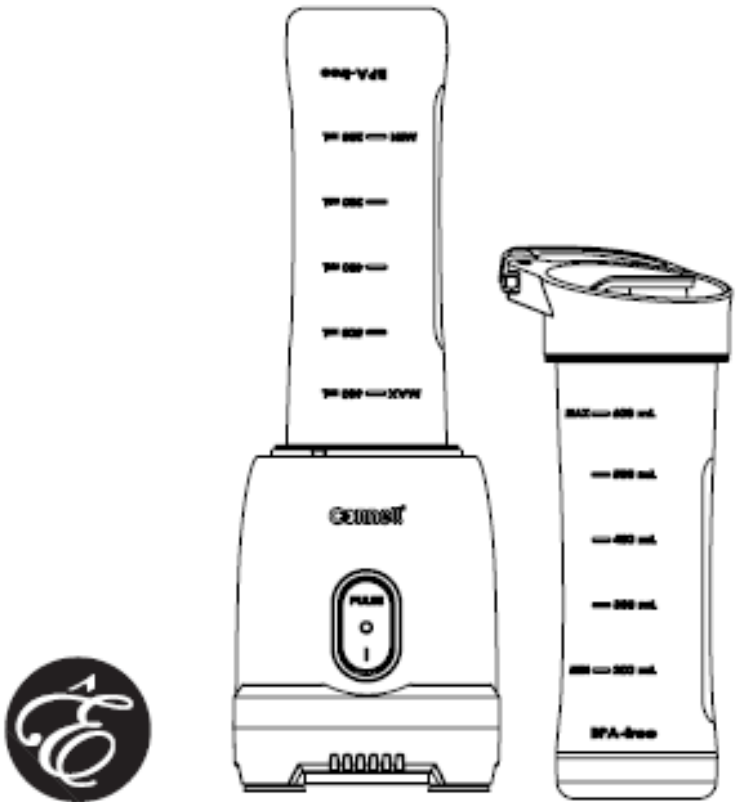




User Manual



Personal Blender

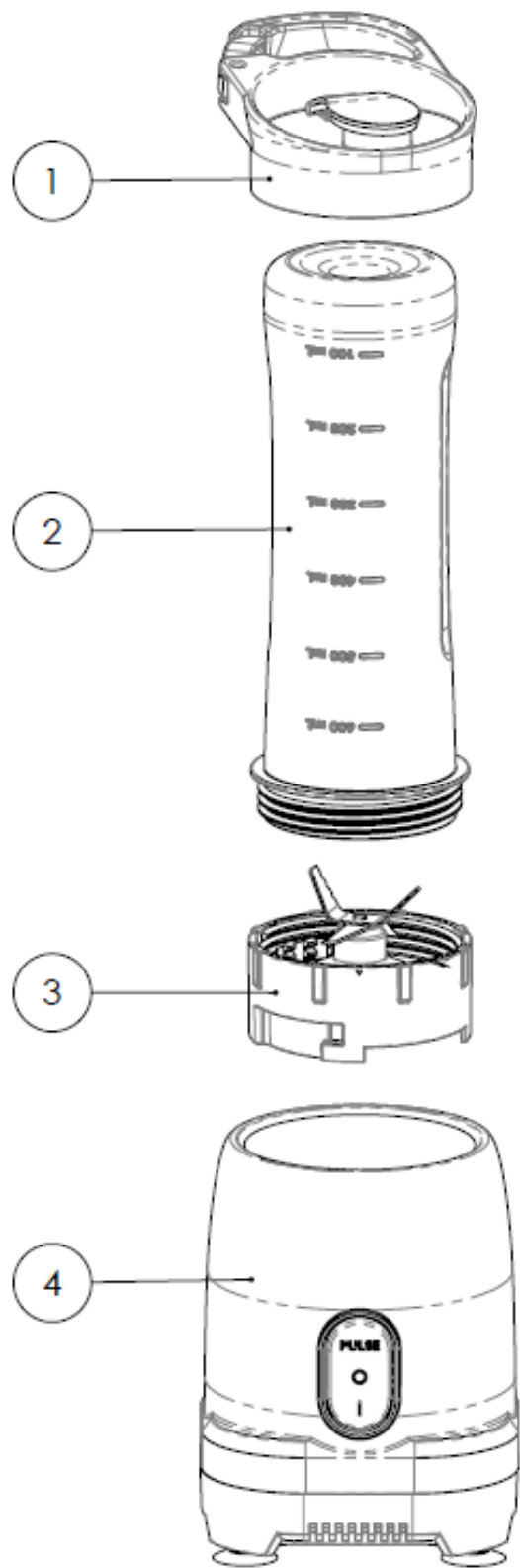
CPB-E601PP
CPB-E601PK

Content

Title	Page No.
Parts Introduction	2
Technical Specifications	2
Before the First Use	3
Operating Instructions	3
Recipes	4
Cleaning and Maintenance	5
Important Guidelines	5

Thank you for choosing CORNELL appliances. We hope you have an enjoyable experience using our products.

Parts Introduction



1. Travel lid
2. Tumbler
3. Blade assembly
4. Motor base

Technical Specifications

Model	CPB-E601PK/CPB-E601PP
Voltage	220-240V~50Hz
Power	200W
Capacity	2 x 600ml

Before First Use

- ❖ Please read these instructions carefully before using and keep them for future reference.
- ❖ Check your local mains voltage to make sure it is the same as stated on the appliance.
- ❖ Carefully unpack the unit and remove all packaging materials. Check the contents to ensure that all parts and accessories are present and received in good condition.
- ❖ Handle the blending blade attachment by its collar only.

WARNING: Do not touch blades. Blade attachments are very sharp. Use extreme care when handling the blades. Failure to do so can result in personal injury.

- ❖ Wash lids in warm, soapy water. Rinse and dry thoroughly.
- ❖ Clean tumblers before first use. Fill tumbler one-quarter full with clean, warm water. Following the steps under **Operating Instructions**, pulse several times using the blending blade. Rinse thoroughly.
- ❖ The motor base can be wiped with a damp cloth.

WARNING: DO NOT IMMERSE THE MOTOR BASE IN WATER.

- ❖ Always make sure the plug is inserted to the power outlet tightly before use.
- ❖ Always ensure the product is placed on a stable and flat surface.

Operating Instructions

1. Place the motor housing on a flat, clean and dry countertop or table.
2. Make sure the unit is unplugged.
3. The unit comes with two (2) tumblers. Place the food to be blended in the tumbler.
4. To assemble the appliance, always hold the blade assembly by its collar before placing it onto the tumbler.

IMPORTANT:

Check to make sure the travel lid is not attached to the tumbler before assembling the blade. If it is, simply remove it.

At the base of the blender's collar, there is a silicon seal that creates an airtight fit with the personal blender's tumbler. After washing in a dishwasher and before each use, always make sure the seal is in its proper place, as heat from some dishwashers may cause the silicon seal to become loose.

WARNING: Never operate the personal blender when the tumbler is empty.

WARNING: Never overfill the tumbler. Do not exceed the 600mL maximum line.

5. Hold the tumbler firmly in one hand. Use the other hand to tighten the tumbler and blade assembly by turning the blade collar clockwise until snug.
6. Plug the power cord into the power outlet.
7. Invert the tumbler with blade assembly. Insert blade collar into the motor base, fitting the tabs into the slots on the motor base.
8. Turn the blade collar clockwise to secure the locking slots firmly into the motor base.

NOTE: The unit will not operate unless the 2 locking tabs on the motor base are properly fitted into the 2 slots on the blade collar.

To process, press PULSE on the upper region of the button to turn on and release to turn off. Pressing the “I” button turns on the blender. To turn off, simply press “O”.

WARNING: Do not operate the motor continuously for more than 1 minute at a time. Allow the motor to rest for 1 minute before continuing.

9. When processing is completed, turn off the blender and the electrical main switch. Turn the tumbler counter-clockwise at the base and lift it up to remove the tumbler and blade assembly.
10. Invert the tumbler and blade assembly to upright position. Hold the tumbler firmly in one hand. Use the other hand to turn the blade collar counter-clockwise and remove the blade assembly.
11. Replace the blade assembly with travel lid to enjoy fresh juice, blended drinks or smoothies immediately. Twist the lid to fasten it onto the tumbler. The hook on the bottle cover can be used to clip onto bags, belts and other items.
12. Unplug the unit when not in use and before cleaning.

Recipes

Chocolate-Banana Milkshake

- 1 scoop of vanilla ice cream
 - 1 banana
 - Chocolate milk
1. Put all the ingredients into the tumbler.
 2. Follow instructions under **Operating Instructions**. Twist the tumbler into the base. Blend until a smooth consistency is reached.
Tip: Add chocolate syrup to make your milkshake even richer!

Banana-Berry Smoothie

- 1 banana
 - ½ cup of blueberries
 - Splash of orange juice or milk
 - 1/8 teaspoon vanilla
 - ½ cup yogurt
 - ½ cup ice cubes
1. Put all the ingredients into the tumbler.
 2. Follow instructions under **Operating Instructions**. Twist the tumbler into the base. Blend until a smooth consistency is reached.
 3. Serve chilled.

Energy Shake

- 1 cup soya milk
 - 2 tablespoons honey
 - ¼ cup walnuts
 - ¼ to ½ teaspoon ground cinnamon
 - 1 ¼ cups vanilla yogurt
1. Put all the ingredients into the tumbler.
 2. Follow instructions under **Operating Instructions**. Twist the tumbler into the base. Blend until a smooth consistency is reached.
 3. Replace the blade assembly with travel lid and enjoy an energetic day.

Cleaning and Maintenance

This appliance requires little maintenance. It contains no user serviceable parts. Any servicing requiring disassembly other than cleaning must be performed by a qualified appliance repair technician.

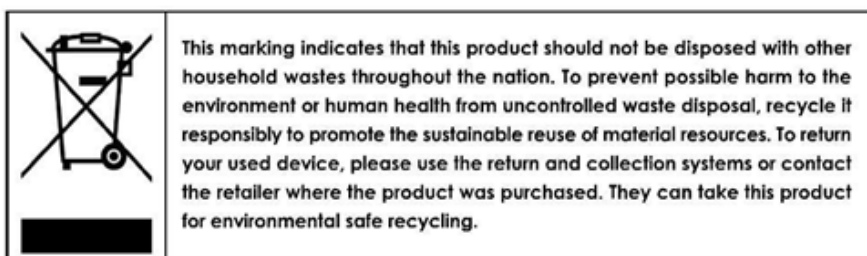
WARNING: Never immerse the motor base, plug or cord in water or any other liquid.

- Always unplug the unit before cleaning.
- Whenever possible, rinse parts immediately after processing to make clean up easier.
- Always handle blades using the blade collar.
WARNING: Use extreme care when handling blades. Do not touch the blades with your fingers as the blades are very sharp and can cause injury if touched.
- If necessary, recommend using a small nylon bristle brush to remove processed food from the blade and the blade area.
- For a quick clean up, fill processing cup one-quarter full with clean, warm water. Refer to the steps under **Operating Instructions** and pulse several times using the blending blade. Rinse thoroughly.
- Remove travel lid. Wash travel lid and tumbler in warm soapy water. Rinse and dry thoroughly.
WARNING: Never use rough scouring pads or abrasive cleaners on any plastic or metal parts as this will damage the surface.
- Processing blades, tumbler and lid are all top rack dishwasher safe.
- The motor base may be wiped with a damp cloth or sponge. Dry thoroughly.
WARNING: DO NOT IMMERSE THE MOTOR BASE IN WATER.
- Store the appliance in its original box or in a clean, dry place.
- Never store the appliance while it is hot or plugged in.
- Never wrap cord tightly around the appliance. Never place any stress on cord, especially where the cord enters the unit, as this may cause the cord to fray or break.

Important Guidelines

- Read all instructions before using.
- This appliance is intended to be used in household and similar applications.
- To protect against risk of electrical shock, do not put cord, plugs, or appliance in water or other liquid.
- To reduce the risk of injury to persons or property, never use this appliance in an unstable position.
- Do not use the tumbler if it is cracked or chipped.
- Do not mix hard ingredients or solid foodstuff without liquid.
- Do not overfill. Failure to add enough liquid before processing may cause the tumbler to break or chip.
- Do not let the cord hang over edges of tables, counters or touch hot surfaces.
- Do not place on or near a hot gas, electric burner, or in a heated oven.
- Do not operate the appliance without anything in it to prevent damaging it.
- Use the appliance only with its corresponding accessories.
- Blades are sharp. Hold by the blade holder.
- Avoid contacting moving parts.
- Do not remove the product when it is operating.

- To prevent risk of injury, never place the blade on the motor base without attaching the tumbler properly. Always completely assemble the blade and tumbler before placing into the motor base.
- Always operate blender with tumbler and blade assembly in place.
- Keep hands and utensils out of the tumbler while blending to reduce the risk of severe injury to persons or damage to the blender. A scraper may be used but must be used only when the blender is not running.
- Do not use boiling liquids for mixing and washing the tumbler.
- The tumbler, travel lid and blade assembly can be washed manually and is dishwasher-safe. Be cautious with the sharp blades of the blade assembly.
- Wipe clean only with damp cloth.
- The current voltage indicated on the motor unit must correspond with your local voltage.
- Always remove the plug from the power outlet when not in use, before putting on or taking off parts, and before cleaning.
- Do not attempt to insert or remove the plug with wet hands.
- This appliance should be used according to instructions to prevent hazard. Care is needed when handling sharp blades, especially while cleaning.
- Use only attachments and accessories sold by the manufacturer. Failure to do so may result in injury.
- This appliance should not be used by children and care should be taken when used near children.
- Children should be supervised to ensure that they do not play with the appliance.
- This appliance is not intended to be used by persons (including children) with reduced physical, sensory or mental capabilities, or lack of experience and knowledge, unless they have been given supervision or instructions concerning the use of appliance by the authorities who are responsible for their safety.
- If the appliance falls or accidentally becomes immersed in water, unplug it immediately. Do not reach into the water.
- Do not use the appliance after it has fallen into or becomes immersed in water.
- If this appliance begins to malfunction during use, immediately release pressure from the cup and unplug the cord. Do not attempt to repair the malfunctioning appliance.
- Do not operate any appliance with a damaged cord or plug, or after the appliance malfunctions or has been damaged in any manner. Repair and services should always be carried out by Amtek Marketing Services Pte Ltd.



Thank you again for choosing CORNELL appliances. Should you require further information/assistance, please visit www.cornellappliances.com or contact Amtek Marketing Services Pte Ltd.



Marketed by :

Amtek Marketing Services Pte Ltd